

AREBOS

Hydraulic Air floor jack

AR-HE-WH22



Please follow all security measures in this user's manual to ensure a secure use.



Thank you for trusting in AREBOS.

List of contents

1. Safety instructions	3
1.1 Explanation of the symbols	3
1.2 General safety instructions	3
2. Use	5
2.1 Lifting.....	5
2.2 Lowering.....	5
3. Technical data	5
4. Parts list	6
5. Care and maintenance	7
5.1 General care	7
5.2 Bleeding the hydraulic system	8
5.3 Oil change.....	8
6. Disposal instruction	8
6.1 Disposal of the packaging.....	8
6.2 Disposal of waste equipment.....	8

Please read and save these instructions. Read through this user's manual carefully before using product. Protect yourself and others by observing all safety information, warnings and cautions. Failure to comply with instructions could result in personal injury and/or damage to product or property. Please retain instructions for future reference.

1. Safety instructions

1.1 Explanation of the symbols



By means of a CE marking, it can be recognized that a product complies with the legal provisions of European legal norms and therefore may be traded within the European Community.



Warning! Read the safety instructions carefully. Failure to follow the safety precautions could result in serious injury or damage. Keep the operating instructions in a safe place.



Warning! Wear safety shoes!



Warning! Wear protective gloves!



Warning! Danger of crushing hands!

1.2 General safety instructions

- **Warning!** When using this device, the following safety precautions should always be followed to minimize the risk of injury and damage to the device.
- Read all instructions before using the device.
- **Keep the work surface clean.** Messy work surfaces can cause injury.
- **Observe the state of your workplace.** Do not use machines and power tools in damp locations. Do not expose them to rain. Illuminate the work surface sufficiently.
- **Keep children away.** Children may not be granted access to the workplace. Do not grant access to the machines, tools or extension cords.
- **Store unused devices.** When not in use, store in a dry place to avoid rust. Always lock the devices to keep them out of the reach of children.
- **Use appropriate tools for your work.** Do not try to use a small tool or accessory to work a

larger, industrial tool. There are certain tasks for which this device was designed. It will do this job better and safer at the speed proposed for this work. Do not make any changes to the device and only use it for its intended purpose.

- **Wear appropriate clothing.** Do not wear loose clothes or jewelry, as these could get caught in the moving parts. Protective, electrically non-conductive clothing and non-slippery footwear are recommended. Wear a hair protector to restrain long hair.
- **Use eye protection.** Always wear ANSI-approved goggles under your face shield. Wear protective gloves as well.
- **Do not lean too far.** Always maintain a secure footing and balance. Do not lean over the running machine.
- **Maintain the device carefully.** Keep the tools sharp and clean for better and safer performance. Follow the lubrication and accessory change instructions. Check the condition of the cables regularly and, if necessary, have them repaired by an authorized specialist. The handles must always be clean, dry and free of oil and grease.
- **Remove all adjustment and other keys.** Make sure that all setting and other keys are removed from the machine and work surface before starting work.
- **Stay alert.** Watch what you do and use common sense. Do not use tools when you are tired.
- **Check for damaged parts.** Before using the device, damaged parts should be checked for proper functioning. Check that all fixed and moving parts are in the correct position and that there are any damaged parts or mounting devices. Any defects should be repaired or replaced by a qualified professional. Do not use the tool if a switch is not turned on or off reliably.
- **Spare parts and accessories.** Only use identical spare parts during maintenance. The use of other parts will void the warranty. Use only accessories designed for use with this tool.
- **Do not use this tool under the influence of alcohol or drugs.** Read the package leaflet warnings to determine if your judgment or reflexes are compromised while taking the medication. If in doubt, do not use the tool.
- **The grooves are sharp and you can cut them.** Handle with care.
- **Do not use high-speed equipment, such as drill presses or lathes, to cut threads with this tap.** High speed can overheat the tool and lead to premature failure. The use of high speed will void the warranty.
- **Taps are heat treated and not intended to be sharpened.** After prolonged use, the device may lose its cutting edge due to corrosion and high speed. This reduces the effectiveness and increases the sensitivity for damage.
- **Keep this manual.**
You will need these instructions for use for safety instructions, assembly instructions, operation and maintenance procedures, parts list and diagram.
- **Do not overload the device.** Know the weight of the object to be lifted.
- **Use the lift exclusively for lifting.** Do not use it for any other purpose. Support the load directly after lifting with adequate supporting equipment.
- **Place the lift correctly.** Use the device only on a stable, level, clean and dry surface that is able to withstand the load.
- **Stabilize the load.** Make sure that the load remains stable throughout. Do not move the load while it is on the jack.
- **Lifting vehicles.** If you want to lift a vehicle, apply the emergency brake and block all wheels.
- **Warning!** The warnings and instructions in this manual may not cover all possible situations. The user of the device must be aware that caution and common sense cannot be assumed by the machine but must be used by the user.

2. Use

2.1 Lifting

- Mount the handle according to the assembly drawing.
- Turn the handwheel clockwise until it is tight.
- Adjust the angle degree of the handle as needed. Place the lift below the load.

Caution: Follow all safety instructions on pages 2 to 4.

- Adjust the extension screw as needed. Turn counterclockwise to raise; clockwise to lower.
- Connect the air supply hose lock fitting to the air inlet. The lever should be in the OFF position (not in the locking position).
- Slide the lever to the ON position and lock with the lever lock. This allows a constant flow of air to the air motor.
- Lift the jack by alternately lifting and lowering the lever.

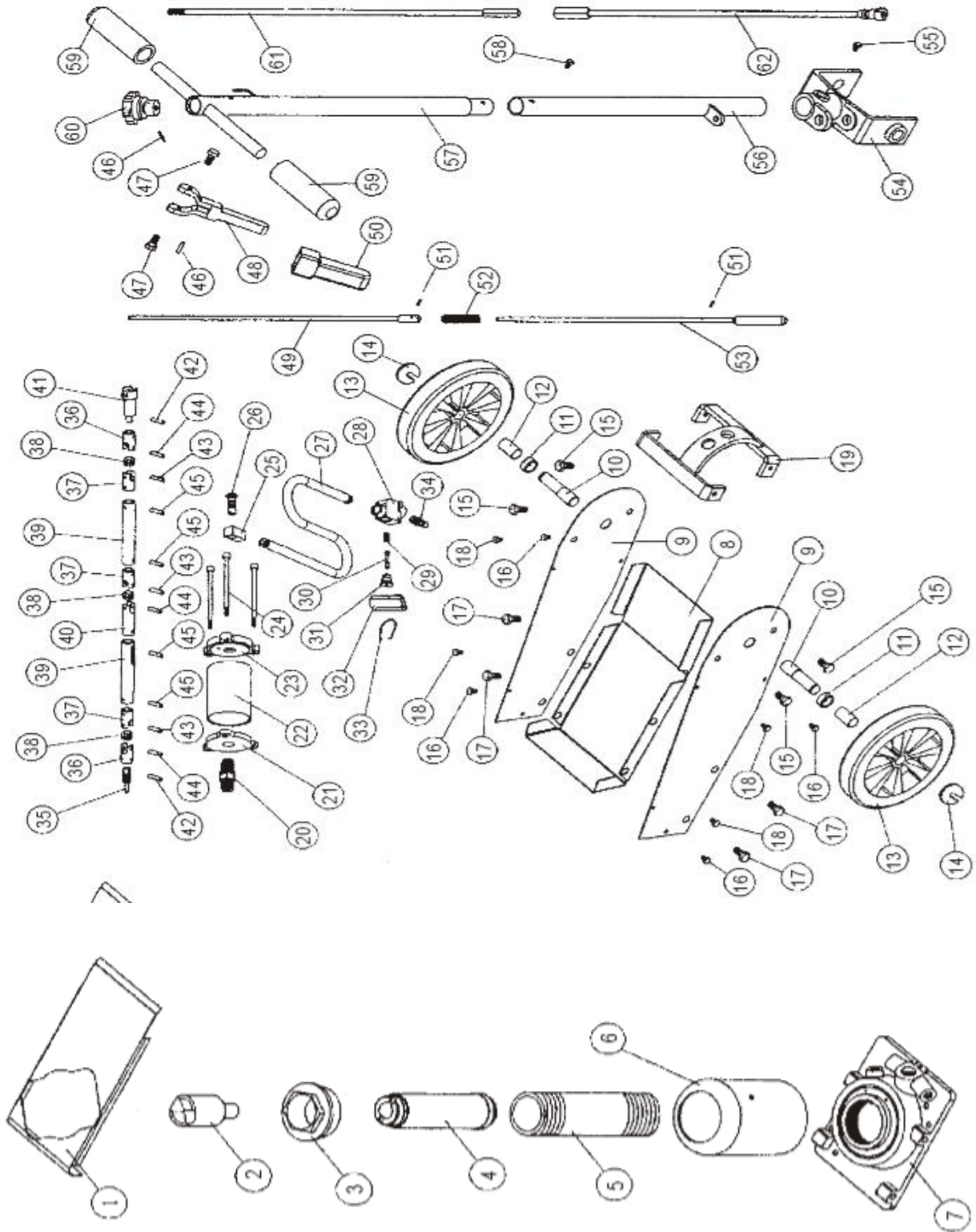
2.2 Lowering

- **Caution:** Avoid quickly lowering of the load. Turn the relief valve slowly.
- Release the locking lever to stop the flow of air to the motor.
- Remove the air supply hose from the air inlet opening.
- Slowly and carefully lower the load by turning the handwheel counterclockwise. Do this extremely slowly and only with the help of the handle (do not use your hand!).
- Lower the extension screw as needed by turning it counterclockwise.
- Remove the jack.

3. Technical data

	Description			
Capacity	22 t	35 t	50 t	Maximum
Vertical movement	8-7/8"	10-1/8"	10-3/8"	Minimum
Plunger	17-1/8"	21-1/2"	16-5/8"	Maximum
Compressed air inlet fitting	2,1" Diameter, 4-3/4" Length			
Weight	¼ NPT			
Rad-Durchmesser	72			
Air hose	3/8" (O.D.) x 48 inches long with crimped hose fittings			
Air pressure	120-200PSI			

4. Parts list



No.	Description	Qty	No.	Description	Qty
1	Cover	1	34	Connection	1
2	Bar	4	35	Oil return valve	1
3	End cover	1	36	Universal joint	2
4	Piston	1	37	Universal joint	3
5	Tappet	1	38	Connection block	3
6	Cover	1	39	Junction line	2
7	Plate	1	40	Universal joint	1
8	Baseplate	1	41	Universal joint	1
9	Side plate	2	42	Cylindrical pin Ø3	2
10	Wheel axle	2	43	Cylindrical pin Ø5	3
11	Can	2	44	Rivet Ø3	3
12	Can	2	45	Spring bar Ø4	4
13	Wheel	2	46	Spring bar Ø3	2
14	Snap ring	2	47	Screw M6	2
15	Screw M10	4	48	Adjustable handle	1
16	Screw M6	4	49	Adjustable rod	1
17	Screw M10	4	50	Handle cover	1
18	Screw M5	4	51	Safety pin	2
19	Side plate support	1	52	Adjustable spring	1
20	Connection	1	53	Adjustable rod	1
21	Triangular base plate	1	54	Handle	1
22	Cylinder	1	55	Screw M8	1
23	Triangle head plate	1	56	Handle	1
24	Hex bolt M8	3	57	Handle	1
25	Swiveling connector	1	58	Top frame	1
26	Swiveling connector	1	59	Stirrup bolt M8	2
27	Rubber tube	1	60	Nut M8	4
28	Housing	1	61	Screw M6	1
29	Conical helical spring	1	62	Handle cover	2
30	Piston rod	1	63	Rotary knob	1
31	Throttle valve	1	64	Oil return valve	1
32	Handle cover	1	65	Oil return valve	1
33	Latch lock	1			

5. Care and maintenance

5.1 General care

- Lubricate the connections and extension screw regularly with light oil.
- Clean the exterior of the jack with a dry, clean cloth.
- If the lifter is exposed to moisture, wipe it dry with a clean cloth and lubricate as described above.
- Keep the lift fully closed with the extension screw and plunger.

5.2 Bleeding the hydraulic system

- There may be air bubbles in the hydraulic system that reduce the efficiency of the jack. Bleed the system when the lifter's efficiency drops.
 1. Turn the handwheel 1-1.5 turns counterclockwise.
 2. Remove the oil filter plug on the side of the tank by pulling lightly.
 3. Connect the air supply hose lock fitting to the air inlet and open the bleed valve for a moment to bleed the hydraulic system.
 4. Turn the handwheel clockwise until it is tight.
 5. Fill up the tank as described below.
 6. Replace the filter plug.

5.3 Oil change

1. Install the jack vertically.
 2. Lower the plunger completely.
 3. Remove the filter plug.
 4. Fill high quality hydraulic fluid to the bottom of the refill port.
 5. Bleed the hydraulic system as described above.
 6. Fill in more oil.
 7. Replace the filter plug.
- **PLEASE READ THE FOLLOWING INFORMATION CAREFULLY**
The manufacturer and distributor has provided a diagram for the overview of the parts in this user manual. The manufacturer does not accept responsibility or guarantee that the buyer is qualified to carry out repairs or the replacement of parts on the device. On the contrary, the manufacturer and dealer hereby expressly declares that any repair or replacement should be performed by a certified and licensed technician. Thus, the buyer assumes all responsibility and liability for any installations or changes made by him.

6. Disposal instruction

6.1 Disposal of the packaging

- Please make reference to the guidelines and standards for appropriate disposal of the packaging valid in your region. In part, the package may consist of plastic bags - watch this respect, with special care to ensure that this is not out of the reach of children. There is a risk of suffocation!

6.2 Disposal of waste equipment

- Equipment must be disposed of in accordance with the rules and regulations of the local waste disposal.
- At the end of the long life of your article, please dispose of the valuable raw materials for proper disposal so that proper recycling can take place. If you are not sure how to proceed, the local waste disposal companies or recycling centers are happy to help.

Our customer service number: +49 (0) 931-45232700

EU Declaration of Conformity

We,

Canbolat Vertriebs GmbH, Gneisenaustraße 10-11, 97074 Würzburg, Germany,

Hereby declare that the product named below, seen its design and construction as well as according to our sales, has been complied with the relevant and basic health and safety EU-requirements.

Name of the product: Hydraulic Air Floor Jack

Model Nr.: AR-HE-WH22

Art. Nr.: 4260199757727

If the product has any modification not allowed by us, this declaration loses its validity.

Tested acc. to:

EU Standard:

2006/42/EC

EN ISO 12100:2010

EN 1494:2000+A1:2008

Date/Manufacturer Signature/Location:

Würzburg, 20.03.2019



Identification of the signatory:

Korhan Canbolat, head of the company

Authorised representative for the technical documentation:

Korhan Canbolat

Office address:

Canbolat Vertriebs GmbH

Gneisenaustraße 10-11

D-97074 Würzburg

Return address can be found in the imprint: <https://www.arebos.de/impressum/>

VAT identification number: DE 263752326

Court of the Commercial Register is Würzburg, HRB 10082

WEEE Reg.-No. DE 61617071