

# AREBOS

## Hand cart with roof

AR-HE-BWD



Please follow all safety measures in this user manual to ensure safe use

Thank you for your trust in AREBOS

## Summary

<b>1. Safety .....</b>	<b>2</b>
<b>2. Product .....</b>	<b>3</b>
2.1 Specification .....	3
2.2 The product at a glance .....	3
<b>3. Folding and unfolding the trolley .....</b>	<b>4</b>
3.1 Opening the cart.....	4
3.2 Folding the trolley .....	5
<b>4. Environmentally friendly disposal .....</b>	<b>6</b>
3.1 Disposal of packaging .....	6
3.2 Disposal of old equipment .....	6

**Thank you for choosing our product. Please read the user manual carefully before using the product for the first time. If you pass on the product to a third party, these instructions must be delivered with it.**

**Keep the instruction manual for future reference.**

**The drawings in this manual may not correspond to the original item.**

## 1. Safety

- **Attention! This trolley is intended for the transport of goods only.**

The transport of children is strictly prohibited! The structure and design of this product are not suitable for the safe transport of people. Improper use can cause serious injury, especially crushing and falling. Never allow children to climb on or play with the trolley. Always use it in a compliant manner to avoid accidents. **It's not a toy!** Do not leave children unattended near the trolley or while they are playing with it.

- The hand truck can only be used on solid and level ground.
- The item or frame is delivered already assembled. The car only needs to open and the roof mounted. No tools are required. The hand truck is only suitable for private use and not for commercial use.
- Installation and regular maintenance may only be performed by adults.
- During operation, the hand truck must be loaded and balanced evenly to avoid possible accidents.
- If the item or individual parts are defective, do not continue to use the shopping cart. Turn Contact our customer service.
- No changes to the material or design of the product are permitted.
- Check the item, especially the wheels, regularly for damage, and Force.
- Do not use this product if parts are missing, damaged, or worn.
- Never use abrasive or chemical cleaners.
- Do not leave the product in the rain. Protect it from the elements.
- In frost and winter, it is recommended to store the product in a dry and sheltered place. shop.

## 2. Product

### 2.1 Specification

EAN	4252023119030 4252023119047 4252023119054
Model	AR-HE-BWDR/S/B
Folded dimensions	76x63x22cm
Unfolded Dimensions	120x63x76cm
Wheel size	Diameter 18cm*10cm
Volume	About 90L
Resilience	100 kg
Net weight	14.5 kg

### 2.2 The product at a glance

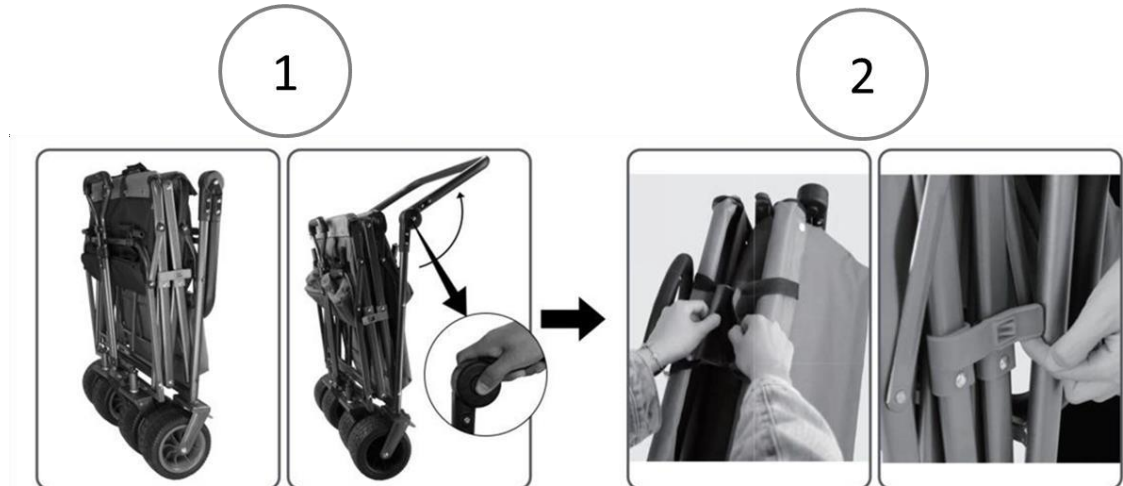


\*Image may vary by model

### 3. Opening and closing the trolley

Assembly can be carried out without tools. Check the transport trolley in advance for damage and complete. Carefully remove the trolley from the packaging and transport bag.

#### 3.1 Opening the cart

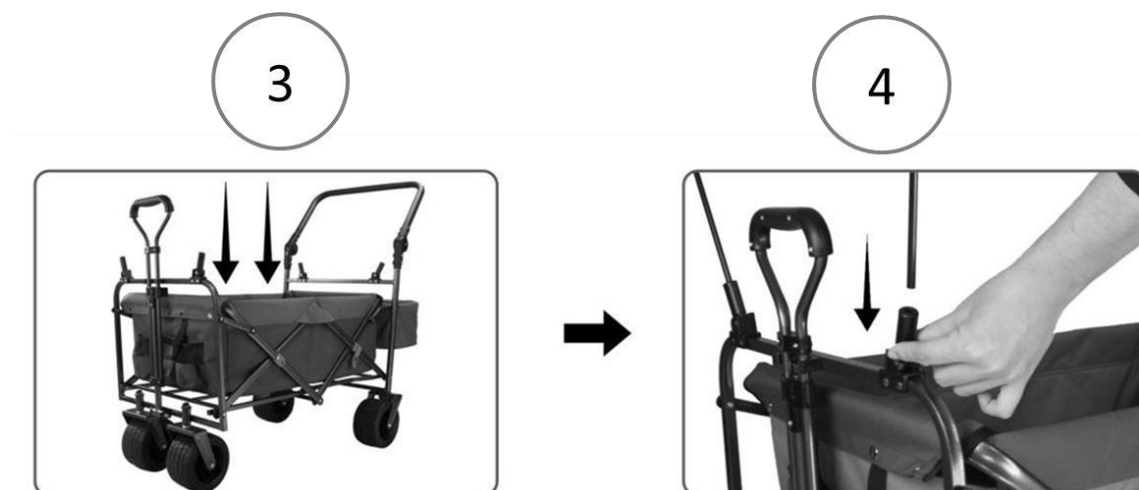


Step 1: Once folded, first adjust the angle of the car's push handle.  
To do this, you need to press and hold the buttons on both sides at the same time.

#### **IMPORTANT!**

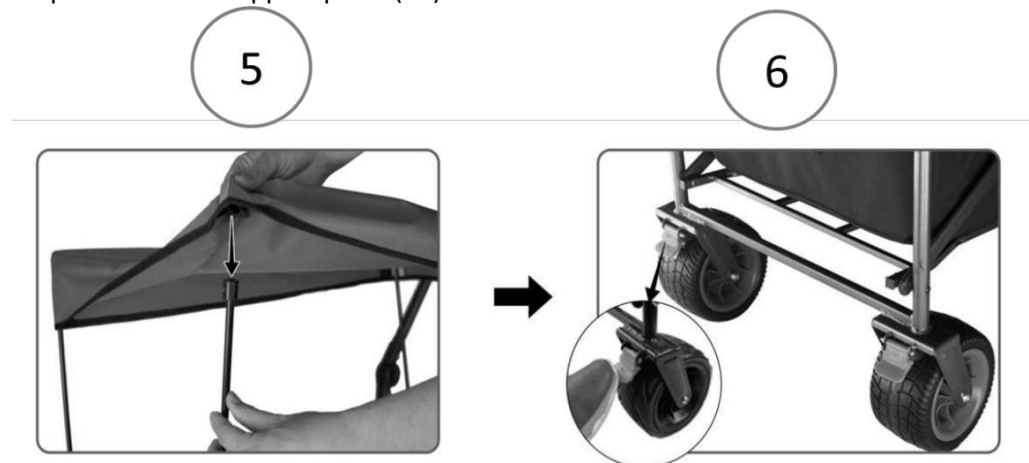
- To adjust the angle of the push handle, you need to press and hold the buttons on both sides at the same time.
- Do not use the push handle if the side buttons are not engaged. Adjust carefully, do not apply excessive pressure.

Step 2: Unlock the buckle on the top and the red automatic lock on the side of the frame.



Step 3: Press down to expand and open the shopping cart.

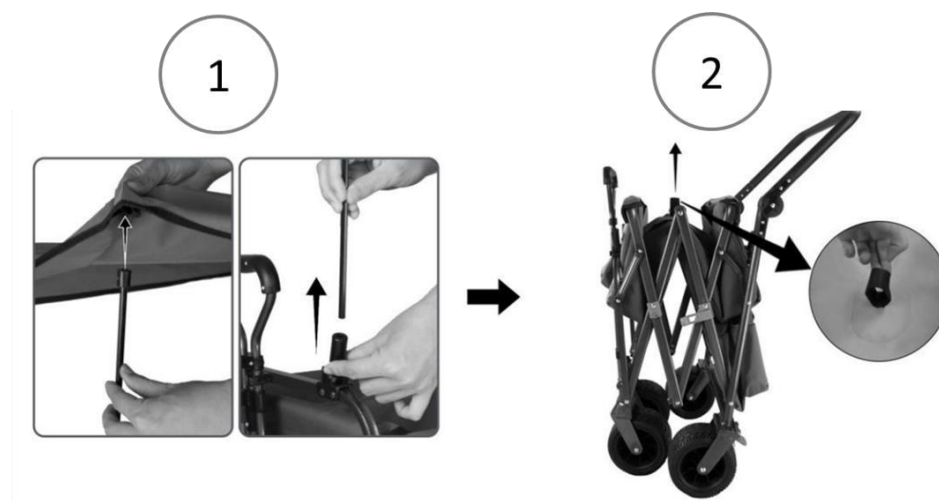
Step 4: Insert the support poles (4X).



Step 5: Mount the canopy over the support bars.

Step 6: Apply the brakes by stepping on them. Press the brakes again to release.

### 3.2 Folding the trolley



Step 1: Remove the canopy and canopy support poles.

Step 2: Lift the handle in the center of the cloth bag until the automatic lock secures the carriage in the folded position.



Step 3: Lower and adjust the push handle to fold it completely.

## 4. Environmentally friendly disposal

**Caution: Risk of suffocation!** The packaging material is dangerous for children. Never let children play with packaging materials.

### 3.1 Disposal of packaging

- The packaging of the device is made of the necessary materials to ensure effective protection during transport. These materials are fully recyclable and therefore reduce the environmental impact. Dispose of the packaging in a recycling bin.

### 3.2 Disposal of old equipment

- Old equipment should be disposed of in accordance with the guidelines and regulations of your local waste management authority. Check with your local government for the address of the nearest recycling center and hand over the device there.

**Our customer service number: Tel.** Phone: +49 931 452 327 00

**E-mail:** [info@arebos.de](mailto:info@arebos.de)

Office address: Canbolat Vertriebs GmbH • Gneisenaustraße 10-11 • 97074 Würzburg

**The return address** can be found in the imprint: [https:// www.arebos.de/impressum/](https://www.arebos.de/impressum/)

## Print

Product variants:

Article	Model	Product	Color
4252023119030	AR-HE-BWDR	AREBOS transport trolley with roof	red grey
4252023119047	AR-HE-BWDS		Black Grey
4252023119054	AR-HE-BWDB		blue grey

If this product is modified without our consent, any warranty will be void.

Date/Manufacturer's Signature/Location:

Würzburg, 20.12.2023



Signature:

Dipl.-Inform. (Univ.) Korhan Canbolat, Managing Director

Representative of this instruction manual/technical data: Dipl.-  
Inform. (Univ.) Korhan Canbolat, Chief Executive Officer

Office Address:

Canbolat Vertriebs GmbH  
Gneisenaustraße 10-11  
D-97074 Würzburg

The return address can be found in the imprint: [https://](https://www.arebos.de/impressum/)

[www.arebos.de/impressum/](https://www.arebos.de/impressum/) ~~VAT no. DE 2675236~~  
Commercial Register Court Würzburg, HRB  
10082 WEEE Reg.-Nr. DE 61617071