

AREBOS

Floor shower

AR-HE-BSC



Follow all the safety precautions in this instruction manual to ensure safe use.

The drawings in this manual may not match the original object.

Thank you for your trust in AREBOS.

Table of contents

| | |
|-----------------------------------|---|
| General safety instructions | 3 |
| Assembly instruction..... | 3 |
| Specifications | 4 |
| Care | 4 |
| Disposal instructions | 4 |
| Disposal and packaging..... | 4 |
| Imprint..... | 5 |

Thank you for purchasing our product. Please read the instruction manual carefully before using the product for the first time. If you make the product available to a third party, this instruction manual must be accompanied by



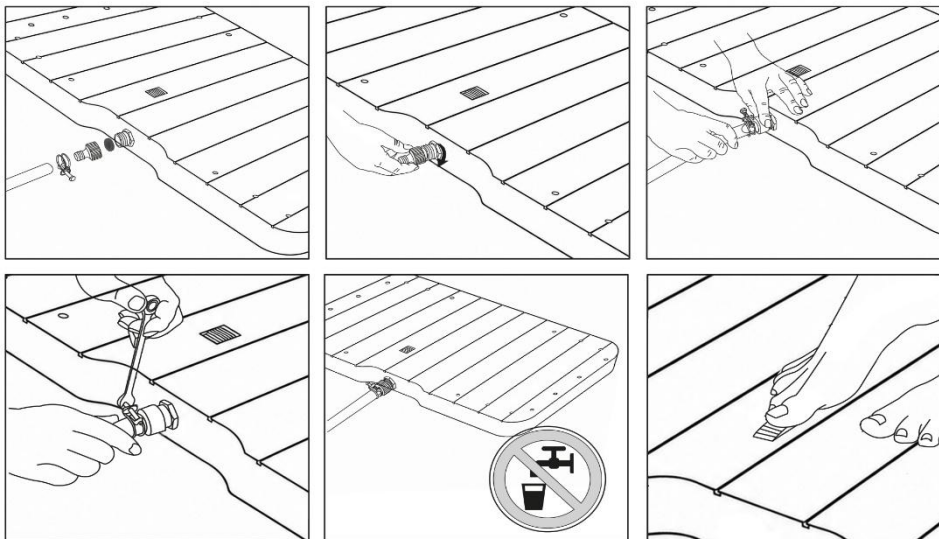
Choking hazard due to plastic bags!
Keep children away!

General safety instructions

- Remove the item completely from the packaging and check it for damage/tears before using it.
- Store packaging parts (foils, plastic bags, polystyrene, etc.) only in places that are not accessible to children, especially infants! Because packaging parts often pose unrecognizable hazards (e.g. risk of suffocation).

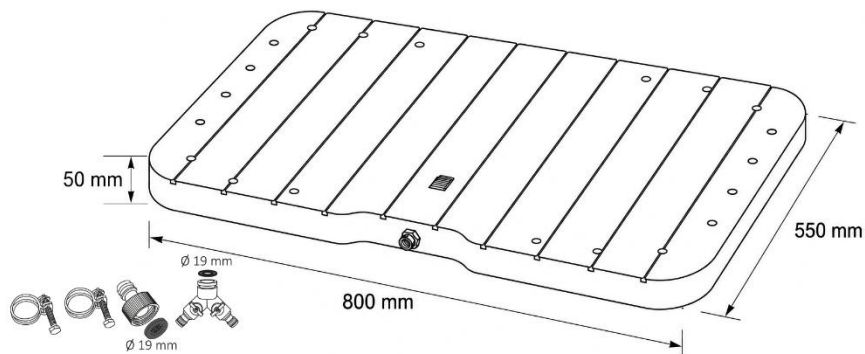
Assembly instruction

1. Set up the floor shower and connect the garden hose with the adapter and metal clamp.
2. Use the supplied adapter and connect it to the intake valve.
3. If necessary, attach the garden hose with the metal clamp.
4. Tighten the metal clamp with the wrench.
5. The floor shower can be flexibly placed anywhere in your garden.
6. Thanks to the built-in bottom wheel, you can not only turn the water jets on and off, but also regulate the height of the water fountain.



Specifications

| | |
|--------------------|----------------|
| | 4252023117685 |
| Material | polypropylene |
| Product Dimensions | 80 x 55 x 5 cm |
| Shape | Rectangular |
| Weight | 4.5 kg |
| Max. load capacity | 150 kg |
| Colour | Black |



Care

For regular cleaning of the floor shower, we recommend a neutral cleaner and a soft brush or cleaning cloth. Detergents should be removed with sufficiently clear water. It is recommended to clean with water and a brush to remove lubricants such as biofilm, leaves, sand, stones or similar.

Disposal instructions

Disposal and packaging

- Please ensure that the packaging is disposed of appropriately in accordance with the guidelines and standards applicable in your region. Some of the packaging may consist of plastic bags - take special care to keep them out of the reach of children. There is a risk of suffocation!

Our customer service number: +44 208 068 5604

Email: info@arebos.co.uk

AREBOS GmbH • Industriestr. 24 • 97297 Waldbüttelbrunn

Imprint

Product Name: Floor Shower
Item number: 4252023117685
Model Number: AR-HE-BSC

If the device is modified without our consent, this declaration of conformity loses its validity.

Date/Signature Manufacturer/Location:

Würzburg, 11.06.2026



Signature:
Dipl.-Inform. (Univ.) Korhan Canbolat, Managing Director

Representative of this Instruction Manual/ Technical Data:
Dipl.-Inform. (Univ.) Korhan Canbolat, Managing Director

Office Address:
AREBOS GmbH
Industriestr. 24
97297 Waldbüttelbrunn

The return address can be found in the imprint: <https://www.arebos.de/impressum/>